

# Mouse anti-Human CD3/HLA-DR, FITC/PE Conjugated mAb

Catalog No: #28239

Package Size: #28239-1 20 Tests

Orders: [order@signalwayantibody.com](mailto:order@signalwayantibody.com)

Support: [tech@signalwayantibody.com](mailto:tech@signalwayantibody.com)

## Description

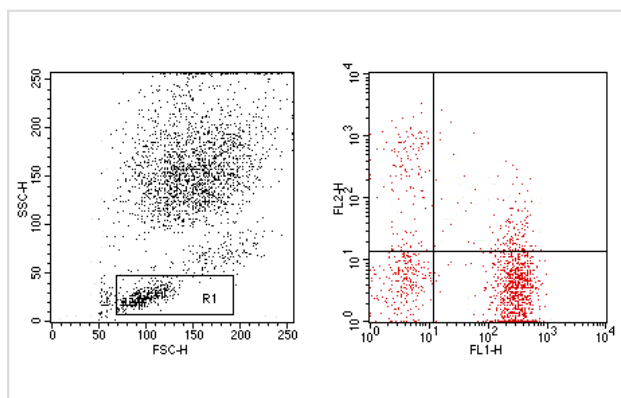
Product Name	Mouse anti-Human CD3/HLA-DR, FITC/PE Conjugated mAb
Host Species	Mouse
Clonality	Monoclonal
Clone No.	4AT3/4AB04
Isotype	IgG2a/IgG1
Applications	FC
Species Reactivity	Hu
Conjugates	FITC/PE
Target Name	CD3/HLA-DR
Formulation	Phosphate-buffered solution, pH 7.4, containing 0.09% sodium azide and 0.2% (w/v) BSA
Storage	Store at 4°C. DO NOT FREEZE. LIGHT SENSITIVE MATERIAL.

## Application Details

Vol.per.Test: 20 &mu;l/Test

Notice: This reagent has been pre-diluted for use at recommended volume per test in flow cytometry analysis. Typically add 10ul of this reagent to 100&mu;l of experimental sample with 1 X 10<sup>6</sup> cells per test. Please refer to the detailed protocol when you perform a test.

## Images



Human peripheral blood lymphocytes analyzed with Mouse Anti-Human CD3/HLA-DR, FITC/PE

Note: This product is for in vitro research use only and is not intended for use in humans or animals.